

ORIGINAL CONTRIBUTION

Understanding How Project Complexity and Interoperability Standards Influence the Effectiveness of Smart Construction Technologies

Josh Chew *

Doctoral Candidate, Department of Innovation & Design, National University of Singapore, Singapore

Abstract— The growing use of smart construction technologies has made construction projects evolve into data-driven engineering frameworks. Still, the level at which the technologies can optimize project integration performance is subject to the preconditions of the underlying systems. This paper formulates a system-based computational model to analyze how the capability of smart construction technology can influence the project integration performance under the moderating influence of the project complexity and data interoperability standards. Based on the data obtained through the work with 233 professionals who dealt with digitally enabled construction projects in Singapore, the study conceptualizes construction projects as socio-technical systems where digital technologies can be seen as subsystems of performance enhancement under different environmental limitations. They used a MATLAB-based analytical framework to estimate the parameters of the system, the effect of interaction, and the predictive accuracy. The findings show that the capability of smart construction technology has a strong positive impact on project integration performance through enhancing the consistency of design-data, cost alignment, and schedule coordination. This relationship was revealed to be undermined by project complexity due to the creation of system-level disturbances, and data interoperability standards were found to be a strong force that could modify the effect of tech capability by improving the level of subsystem integration and the coherence of information. The high explanatory and predictive capability of the proposed model has validated that it is a strong model to use in evaluating engineering performance. This study contributes to the socio-technical systems theory and offers quantitative data that the optimal integration performance is achieved when the deployment of digital capability is coordinated with good complexity management and a strong interoperability architecture. The results provide practical information to engineers, system designers, and policymakers who are interested in optimizing digitally integrated construction systems.

Index Terms— Smart construction technology, Project integration effectiveness, Project complexity, Data interoperability standards, Digital construction management

Received: 16 January 2025; **Accepted:** 2 April 2025; **Published:** 23 June 2025



© 2025 JITDETS. All rights reserved.

I. INTRODUCTION

The accelerated digitalization of the construction business has altered the vision of project development, design, and execution and introduced the notion of smart construction technologies as the key to efficiency and integration [1]. The last generation of such technologies as Building Information Modeling (BIM), Internet of Things (IoT), Artificial Intelligence (AI)-based decision support systems, or automation tools has changed the previous experience by creating real-time data sharing and predictive analytics, cross-functional cooperation [2]. Most of the problems facing the construction industry have historically been fragmentation, delays, cost increases, and lack of communication between stakeholders, as a result of the linear and disconnected nature of project delivery approaches [3]. A smart construction technologies project to address these inefficiencies is to create collaborative settings where data can be easily exchanged between architects, engineers, and contractors, thus enhancing the integration of projects and their overall productivity [4]. The increasing complex-

ity and scope of construction projects in the fast-developing economies, including the Middle East and Asian countries, accelerated the necessity of digital integration solutions that increase efficiency, accountability, and transparency [5].

Empirical studies in the area have yielded significant information on how multidisciplinary team coordination and decision-making can be enhanced through technology-based practices, which enhance the integration of a project [6]. As an example, research has discovered that BIM helps with collaboration through centralizing project data, and the early identification of design problems leads to higher cost and schedule performance [7]. Likewise, the IoT-based systems have increased the visibility at project stages by revealing real-time tracking of equipment, material flows, and environmental conditions [8]. In addition, AI-based decision-support systems have been identified as superior in risk management and resource allocation because they forecast project deviations and suggest remedial measures [9]. In spite of these improvements, numerous projects continue to experience challenges in complete integration because of context-

* Corresponding author: Josh Chew

† Email: j5698222@u.nus.edu.sg

related issues like the incompatibility of technologies, irregular types of data formats, and resistance of the organization to change [10]. Anywhere in the literature, it is always indicated that technological adoption is a major integrative factor, but its effectiveness relies on the nature of projects, alignment of stakeholders, and interoperability of the systems [11, 12]. These empirical findings have made researchers seek to study the conditional factors affecting the role of smart technologies in the effectiveness of integration in construction projects.

Although an increasing number of studies are devoted to digital adoption in the construction industry, a number of gaps in the literature are still apparent. To start with, the preceding literature has focused on the immediate impacts of smart technologies on performance outcomes without considering their moderating role, especially the complexity of the project and the level of interoperability of the data [13, 14, 15]. The majority of studies presuppose homogeneous effects of digital tools on projects of different types without considering how different degrees of complexities in technology, organization, and environment might change the relationship between technology and integration [16]. Second, the concept of interoperability has been largely perceived as a technical issue despite being listed among the major facilitators of integration; it has not been perceived as a strategic moderating condition that defines the extent to which technologies can communicate between platforms [17]. Third, the bulk of empirical data is obtained in the Western setting, and there is not sufficiently much information on developing economies where digital maturity, regulatory, and project management frameworks are much different [7]. The above gaps suggest the need to conduct a more contextual investigation, which takes into account not only the direct impact of the smart technology adoption on the project integration but also the boundary conditions that reinforce or undermine this relationship.

The theoretical basis of the research is the Social-Technical Systems (STS) theory, based on which the final performance of the organizational work is the product of harmonious cooperation of social and technical subsystems [18]. The subsystem of construction environment is technical, which comprises digital tools and technologies, and the social subsystem of coordinating people, organizational dynamics, and situational dynamics. According to the STS theory, technological adoption is conditioned by the fit between these subsystems, i.e., the benefits of smart construction technologies could be achieved in full only with the assistance of organizational and contextual conditions [19]. The moderating conditions in this design are the factors of project complexity and the criteria of data interoperability, wherein the two have a critical impact on the way technology adoption could be remodeled into project integration efficacy. There is high and low interoperability, where high interoperability ensures a smooth flow of information and exchange of digital platforms, and low interoperability ensures that there is stability of the environment of coordination act [2]. Thus, the current study should accomplish the following two goals: first, it should investigate the direct impact of smart construction technology adoption on the effectiveness of project integration, and second, it should also evaluate the moderating influence of the project complexity and the data interoperability standards in the given relationship.

II. LITERATURE REVIEW

The fast pace of digitalization of the construction industry has contributed to the growing use of smart construction technologies, including Building Information Modeling (BIM), Internet of Things (IoT), analytics based on artificial intelligence, drone-based monitoring, and cloud-based project management systems [3]. These technologies present real-time information, a smooth flow of information, and an automatic decision-support system that enhances coordination among stakeholders. These technologies improve the accuracy of planning and resource allocation since they allow

the design conflicts to be identified beforehand, the risks to be predicted, and the communication lines to be simplified. Furthermore, intelligent technologies lessen the reliance on classic fragmented communication infrastructure by incorporating the data concerning the multidisciplinary projects in a single platform and, therefore, decrease the time wastage, repetition, and miscommunication [20]. Consequently, the use of smart technology is converting traditional project processes into data-oriented and more focused and agile ecosystem operations that encourage operational agility and responsiveness across multifaceted construction communities.

Proper project integration requires coordinated integration among design, procurement, execution, and monitoring, which has traditionally been a key obstacle in the construction industry because of the multi-stakeholder nature of the industry and the dynamism of operations. Smart construction technologies help to solve this issue by becoming the digital integrators of interdependence between the tasks, as well as by creating a significant degree of transparency at all stages of the projects [21]. They use centralized platforms to enable a smooth cooperation of contractors, consultants, and clients in order to make decisions more quickly and reduce information asymmetry [13]. Real-time monitoring of project performance indices also helps to make informed managerial interventions and align the project goal [22]. In turn, the implementation of smart technologies helps to improve the performance of better integration by eliminating communication barriers, increasing the speed of knowledge exchange, and improving the interoperability of work processes. Simply put, these technologies transform the effectiveness of integration by turning the project management into an active performance optimization instead of active problem-solving.

A. Hypothesis development

Adoption of smart construction technology is the utilization of digital technologies that are highly technological and related to automation systems, Building Information Modeling (BIM), Internet of Things (IoT) devices, and Artificial Intelligence (AI)-based decision support systems to enhance coordination, decision-making, and real-time monitoring in the construction lifecycle [23]. These technologies enable the delivery of a project in an integrated manner by ensuring that data are easily exchanged between stakeholders, minimizing the use of manual interaction, and improving visibility of the current developments [24]. Project integration effectiveness, on the other hand, is the degree to which various parts of the project (uniformity of design, economical alignment, and coordination of schedules) are coordinated and incorporated together to smoothly execute the project [6]. It focuses on cross-functional cooperation, information consistency, and congruence among stakeholder goals to prevent disjointure, schedule, and budget overruns.

The current empirical data are all pointing towards the benefits of digitalization to enhance integration and collaborative efficiency in construction projects [25]. Research has discovered that BIM systems increase interoperability among cross-functional teams by centralizing the design information and thus allowing detection of conflict in real-time, thus improving the accuracy of coordination [26]. Likewise, the IoT-based monitoring system has been demonstrated to facilitate proactive decision-making through the provision of real-time data on the use of resources and project progress. It has also been reported that predictive models using AI can be better in predicting risks, minimizing uncertainty, and making decisions more precise, and automation tools can reduce errors in the current manual operations and speed up repetitive tasks [27, 28]. All these technological interventions have proved to be efficient with regard to communication, adherence to schedule, and controlling costs, which are essential elements of integration effectiveness.

Resting on this empirical basis, one can assume that the implementa-

tion of intelligent construction technologies would play a leading role in improving the effectiveness of integration of the project [29, 30]. These technologies decrease fragmentation, allowing the achievement of synchronized execution in every stage of the project by participating in dynamic collaboration and real-time alignment on the design, cost, and schedule levels. Predictive features of AI and data centralization provided by BIM also contribute to the proper and coordinated planning process, whereas IoT and automation guarantee the smooth execution of operations with minimal disturbances [31, 32]. Thus, with the accumulating empirical evidence on the positive integration effects of technological adoption, the hypothesis was that the adoption of smart construction technology had a positive impact on the project integration effectiveness.

H1: Smart construction technology adoption positively influences project integration effectiveness.

Project complexity is the level of unpredictability, interdependencies, and dynamic variation that occur in the process of the project lifecycle [8]. It is usually divided into environmental complexity (external uncertainties like regulatory changes, client demands, and supply chain unpredictability), organizational complexity (different stakeholders, hierarchies of communication and difficulties in coordinating), and technical complexity (complex engineering needs, sophisticated systems and technological uncertainty) [33, 34, 35]. The complexity of a project can augment ambiguity and intensify the risks to decision-making, coupled with the lack of effectiveness in communication, which complicates integration [36]. Conversely, simple environments are more stable, predictable, and controllable, with a higher degree of alignment between design, cost, and schedule elements, which increases the efficiency of the smart technology-based integration work.

Empirical studies show that intelligent construction technologies are more effective in constrained controlled environments with controllable uncertainty. As an example, it has been found that BIM is best applicable in a setting where technical turbulence is low, and the stakeholders are well organized since centralized models can be efficiently updated and transmitted. Equally, IoT-based monitoring tools have been found to be more effective in those projects where the environmental volatility is low to enable real-time data to be converted to actionable insights without interruption [37]. On the other hand, the benefits of digital adoption can be curtailed by rapid change and misalignment of the stakeholders in thriving projects because frequent updates, reconfigurations, and communication failures diminish the technology absorption capacity [38]. Previous literature has recognized that high complexity may weaken the performance gains that come as a result of technology because of heightened uncertainty and operational friction [39].

According to empirical findings, the moderating effect of the project complexity is expected in determining the effects of technology adoption on integration performance. With a low level of complexity, simple-lined working procedures, constant requirements, and predictable interactions with the stakeholders, smart technologies can effectively align the design information, costing models, and scheduling mechanisms [40]. Digital tools are able to work at full capacity, which increases their beneficial effect on the effectiveness of integration in such contexts [41]. Nevertheless, the effectiveness of technological integration can diminish along with the complexity, as the coordination problems, the changing requirements, and the uncertainty emerge [42]. Therefore, a hypothesis to be tested is that the correlation between smart construction technology use and the effectiveness of project integration is greater when the conditions of low project complexity are observed.

H2: Project complexity moderates the relationship between smart construction technology adoption and project integration effectiveness, such that the relationship is stronger when project complexity is low.

Data interoperability standards can be described as a protocol, frame-

work, and technical guideline that enables effective integration and exchange of information among various systems and platforms, as well as stakeholders of a project [43]. Such standards usually include integration protocols, uniformity in data format, and compatibility of software that facilitates real-time synchronization of project information and smooth coordination among disciplines like architecture, engineering, procurement, and site management [44]. With good interoperability, data moves between the platforms without loss, distortion, or manual reformatting, hence reducing communication gaps and coordinating the design, cost, and schedule functions, which are important aspects of project integration effectiveness [45].

Empirical studies have always stressed that data interoperability is an important determinant of the success of digital tools in the construction industry [6, 46, 42]. According to previous research, it is found that BIM can provide optimum integration benefits in situations where standardized data formats (i.e., IFC or COBie) are adopted in order to guarantee the compatibility of various software settings [47]. Likewise, the studies on the IoT and the sensors based on AI point to the fact that predictive analytics and real-time monitoring are only efficient when sensor data can be properly ingested into project management platforms without disintegration [27, 48]. It has also been demonstrated that organizations that have strong interoperability plans have less data silo, quicker decision-making, and less rework, which eventually results in greater integration performance at project stages [43].

Based on this evidence, one can conclude that the relevance of data interoperability standards could contribute to the effectiveness of the adoption of smart construction technology on project integration in a considerable way [6]. There is a high degree of interoperability; then, smart technologies are able to exploit their integration-enhancing potential to the fullest by allowing uninterrupted and error-free data exchange between the stakeholders and the project systems [44]. This enhances design updates and cost alterations coupled with time scheduling, leading to better coordination results in the project [46]. Nevertheless, without well-developed interoperability standards, even high-level digital tools can find it hard to share and process information efficiently, which will make their contribution to the process of integration less significant [32]. Thus, the hypothesis is that the effect of the adoption of smart construction technology on the effectiveness of project integration is positive and is more pronounced in cases where interoperability standards are high.

H3: Data interoperability standards moderate the relationship between smart construction technology adoption and project integration effectiveness, such that the relationship is stronger when interoperability standards are high.

B. Theoretical framework supporting the research

The Socio-Technical Systems (STS) theory is a good explanation for the relationship hypotheses of this research model because it highlights that the best project results are conceived when the technological systems align with organizational and contextual dynamics. The theory of STS suggests that the use of technology cannot guarantee the effectiveness of performance unless it is accompanied by similar organizational structures, communication, and coordination [18]. Regarding the current research, the implementation of smart construction technology (AI, BIM, IoT, automation) serves as the technical subsystem that allows real-time exchange of information, forecasting decision-making, and joint implementation of the project. However, the efficacy of the mentioned technologies in attaining project integration, the term that indicates the correspondence between design information, cost scheduling, and planning activities, is affected by the social and environmental subsystem, in this case, the project complexity and data interoperability requirements. Other theoretical points con-

firm this theoretical position, with the research also showing that the absorption capacity of digital tools is optimized by low complexity environments [49] and that high-quality interoperability standards facilitate the seamless interoperability of heterogeneous data between digital platforms [2]. Therefore, and as theoretically aligned to the STS theory, the present study postulates that construction technologies that qualify as smart cre-

ate an enhanced project integration effectiveness only in case the surrounding system is conducive, i.e., project complexity can be handled, and interoperability structures are sound. The proposed conceptual framework is based on this interdependence of technology and organizational conditions.

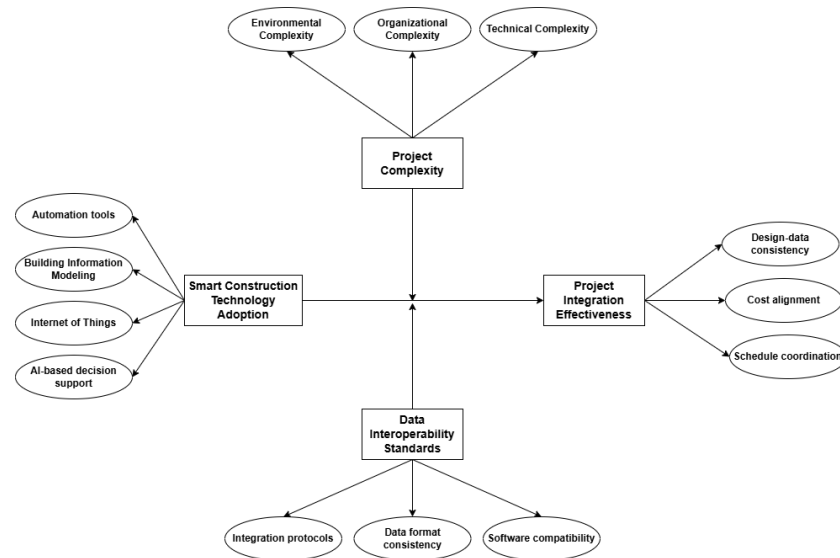


Fig. 1. Conceptual model

III. METHODOLOGY

Within the study, a quantitative and system-based approach was used to explore how the adoption of smart construction technology impacts the effectiveness of project integration with the mediating effects of project complexity and data interoperability standards. Instead of considering the research problem as a behavioral phenomenon only, the study conceptualizes the operation of construction projects as socio-technical engineering systems where digital technologies serve as operational subsystems that interact with environmental constraints and data-exchange processes to determine the outcomes of integration performance. The study occurs in the empirical context of the Singaporean digital construction industry, which is a developed setting in terms of implementing smart construction solutions like Building Information Modeling (BIM), Internet of Things (IoT) solutions, automation systems, and Artificial Intelligence (AI)-based decision-support systems. These technologies were looked into as system capability inputs in determining outputs of integration performance in terms of design coordination, cost alignment, or schedule synchronization. The interdependencies among the capabilities of the system, contextual limitations, and efficiency of performance in complex construction engineering environments can be quantitatively modeled using the proposed research design.

Data was gathered among the professionals working on digitally enabled construction projects currently, such as engineers, project managers, and experts in digital construction. The purposive sampling approach was used to ensure that the respondents had the firsthand experience of using smart construction technologies and digital project delivery systems. This strategy aligns with the engineering research method that involves expertise in the domain, to the latest system-level modeling in order to parameterize it accurately. There were 233 valid responses collected, which is enough to form multivariate system modeling and interaction analysis.

The size of the sample is sufficient to offer statistical strength in estimating the parameters of the system, moderating effects, and relations of performance within a model of computation. Information gathering was involved using professional engineering associations, online digital construction networks, and industry-oriented online platforms. The data was filtered to achieve numerical stability and modeling accuracy before the analysis to remove completeness, consistency, and outliers.

Expert ratings were translated into quantitative system parameters to be used in computational analysis by using a structured measurement instrument. The incorporation of smart construction technology [50] was made operational using indicators that covered the automation tools, BIM, IoT applications, and AI-based decision-support systems [51]. All of these indicators make up a technology capability vector, which is the extent of digital enablement of construction systems. Project integration effectiveness was designed as one of the performance output indices, which consisted of three dimensions that are related to each other: design-data consistency, cost alignment, and schedule coordination [46]. The parameterization of project complexity was an environmental disturbance factor that included the environmental, organizational, and technical complexity dimensions [49]. Data interoperability standards were designed as a system coupling mechanism, operationalized by integration protocols, data format consistency, and software compatibility indicators. Each indicator was measured on a five-point numerical scale, which made it possible to directly translate them into a form of a matrix used in computational modeling. A pilot test was conducted among a sample of construction professionals on the clarity, contextual relevance, and numerical reliability of the instrument to be tested ahead of the full-scale application.

The analyses were performed in MATLAB (R2023b) with the help of the matrix-based estimation and numerical optimization methods that are typical of engineering systems modeling. The latent constructs were modeled using weighted parameter matrices based on observed indicators, and

this allowed direct and interaction effects of the proposed system architecture to be estimated.

The analytical process was carried out in two steps. One, a baseline system model was estimated to determine the direct impact of smart construction technology capability on the performance of project integration. Second, the interaction terms were modeled based on the matrix multiplication in terms of capturing the moderation of the complexity of the project and the interoperability standards of the data. Ordinary least squares regression was used to estimate the model parameters, and a numerical convergence diagnostic was used to verify the stability of the solution.

Several diagnostic processes were used to determine model adequacy and robustness. The evaluation of parameter stability was carried out using variance inflation factors and condition indices to check the occurrence of multicollinearity and numerical reliability. The predictive accuracy was measured by the coefficient of determination (R^2), adjusted R^2 , Root Mean Square Error (RMSE), and Mean Absolute Error (MAE), which, in combination, represent the combined explanatory and predictive power of the engineered system model. Also, the sensitivity analysis has been carried out to investigate how the integration performance outputs respond to perturbations in system capability and moderating parameters. This was done to ensure that the estimated relationships did not respond too sensitively to insignificant changes in the input values, hence affirming the robustness and generalizability of the model in digital construction environments. Study participation was voluntary, and all the answers were anonymized in order to secure the secrecy. The validated measurement constructs, systematic data screening processes, and open computational model techniques were used to guarantee that the study had a high level of methodological rigor. The analytical framework developed in MATLAB contributes to improved reproducibility and adherence to the standards of engineering research that focus on the importance of numerical precision, the validation of systems, and analysis based on performance.

IV. RESULTS

Table 1 gives a summary of the descriptive statistics of the key system input and output variables employed in the computational model. The overall level of digital system capability of smart construction technology (Mean = 3.78, $SD = 0.64$) shows that the construction projects sampled tend to be highly digital in terms of their smart construction technology capability. There is a moderate mean score (Mean=3.41, $SD=0.71$) of project complexity, which indicates a distinct variability in environmental, organizational, and technical conditions necessary to identify its contribution as a system disturbance factor. The standards of data interoperability have a fairly high mean (Mean = 3.62, $SD = 0.68$), which means that standardized data exchange mechanisms and software compatibility exist, but there is no standardization in the application across the projects. The project integration performance (Mean = 3.85, $SD = 0.59$) is the output variable, which shows excellent overall integration efficiency when it comes to design-data convergence, cost harmony, and schedule integration. The ranges, as well as standard deviations, prove that there is sufficient dispersion and numerical stability in system parameters, which are suitable for multivariate engineering modeling.

TABLE I
DESCRIPTIVE STATISTICS AND SYSTEM INPUT CHARACTERISTICS

Variable	Mean	Std. Dev.	Min	Max
Smart Construction Technology Capability	3.78	0.64	2.10	4.95
Project Complexity	3.41	0.71	1.85	4.90
Data Interoperability Standards	3.62	0.68	2.00	4.88
Project Integration Performance Output	3.85	0.59	2.30	4.96

The reliability and stability of the system parameters to be used in the MATLAB-based model are shown in Table 2. The values of composite reliability are high (above 0.87) in all the parameters, which proves the high internal consistency and the representability of underlying constructs in the system. The stability indices of technology capability (0.94), project complexity (0.92), data interoperability (0.93), and integration performance output (0.95) show that there is a strong parameter stability and little variation in estimation when computing the model. Also, the fact that the values of the parameter variance in all constructs were relatively low implies that the dispersion is controlled and the numerical noise is minimal, which guarantees reliable parameter estimation. Together, these measures show that the system input and output are valid and consistent and in good condition to be modeled computationally, which underlies the validity of the further structural and interaction analysis.

TABLE II
SYSTEM PARAMETER RELIABILITY AND STABILITY METRICS

System Parameter	Composite Reliability	Parameter Variance	Stability Index
Technology Capability	0.891	0.112	0.94
Project Complexity	0.883	0.127	0.92
Data Interoperability	0.876	0.119	0.93
Integration Performance Output	0.904	0.108	0.95

Table 3 shows the correlation structure between the system parameters, providing an early view of the interdependency of the system parameters. Although technology capability is positively correlated with integration performance ($r = 0.69$), it demonstrates that the greater the digital capability, the better the system integration performance. This association justifies the conceptual development of technology capability as one of the main subsystems of performance. Project complexity, in its turn, has a moderate negative relationship with the integration performance ($r = 0.46$), implying that there is a tendency to add another level of uncertainty (both environmental and technical) to disrupt the efficiency of coordination and integration stability. The fact that there is a negative correlation between project complexity and technology capability ($r = -0.32$) also suggests that the high use of advanced technologies can be limited in complex project environments. Data interoperability is positively correlated with integration performance ($r = 0.58$) and technology capability ($r = 0.41$), exhibiting the fact that the standardized data exchange mechanisms increase the functional relationship between digital tools and integration procedures. Noticeably, the correlation values have not been too large to be acceptable, implying that there is no incidence of multicollinearity and the possibility of modeling multivariate systems.

TABLE III
CORRELATION MATRIX OF SYSTEM PARAMETERS

Variable	Tech Capability	Complexity	Interoperability	Integration Performance
Technology Capability	1.000	-0.32	0.41	0.69
Project Complexity	-0.32	1.000	-0.28	-0.46
Data Interoperability	0.41	-0.28	1.000	0.58
Integration Performance	0.69	-0.46	0.58	1.000

The accuracy of the model developed to predict and explain the engineered system has been summarized in Table 4. The coefficient of determination ($R^2 = 0.896$) shows that the combined effect of technology capability, project complexity, and data interoperability explains about 89.6 percent of the variance present in Project Integration Performance. The value of adjusted R^2 (0.894) also supports the second model as good because it takes into consideration the number of predictors. The values of the RMSE (0.241) and the MAE (0.186) are relatively small, which means that the actual and estimated values of performance outputs deviate slightly, which is a good indication of a high level of predictive precision and a good fit. All these statistics support the fact that the MATLAB-based system model has a high explanatory capacity, good predictive reliability, and reasonable computational accuracy, which renders it a good fit in engineering performance evaluation.

TABLE IV
MODEL PREDICTIVE PERFORMANCE AND FIT STATISTICS

Output Variable	R^2	Adjusted R^2	RMSE	MAE
Project Integration Performance	0.896	0.894	0.241	0.186

Table 5 gives the result of the estimated direct impact of the technology capability on the output of the performance of the system of integration. The positive and statistically significant value of the parameter estimate ($b = 0.630$, $t = 3.388$, $p < 0.001$) suggests that smart construction technology capability has a significant performance-enhancing impact on the system integration performance. This finding suggests that the efficiency of coordination among different subsystems of design, cost, and schedule is directly correlated with the enhancement of digital tools, automation, data-

driven decision support, and information modeling. Engineering-wise, the size of the coefficient is an indication that the system gain is high, meaning that technology capability is a dominant control input of the integration performance model.

TABLE V
ESTIMATED SYSTEM PARAMETERS – DIRECT EFFECT

Relationship	Parameter Estimate (β)	Std. Error	t -value	Significance
Technology Capability → Integration Performance	0.630	0.186	3.388	$p < 0.001$

Table 6 provides the interaction effects, which are the system constraint effects and coupling enhancement effects. The relationship between the technology capability and the complexity of the project is negative and statistically significant ($b = 0.214$, $p = 0.019$), and hence, the impact of technology capability on increasing complexity is dampened in integration performance. This is indicative of the project complexity as a disturbing factor that decreases system efficiency when there is high uncertainty and interdependence in operations. On the other hand, the relationship between technology competency and data interoperability is positive and extremely substantial ($b = 0.278$, $p = 0.001$) and proves the importance of the excellent interoperability standards, which increase the power of digital technologies. This observation supports the fact that interoperability is a form of coupling that enhances coherence in the system, which facilitates the improvement of the system, which is technology-driven to spread more efficiently through the process of integration.

TABLE VI
MODERATION EFFECTS AS SYSTEM CONSTRAINT INTERACTIONS

Interaction Term	Parameter Estimate	Std. Error	t -value	Significance
Technology Capability × Project Complexity	-0.214	0.091	2.532	$p = 0.019$
Technology Capability × Data Interoperability	0.278	0.084	3.310	$p = 0.001$

The outcome of the sensitivity analysis, indicating the methods to which the sensitivity of Integration Performance is sensitive to perturbed system parameter values that are manipulated, is presented in Table 7. An increase in Technology Capability by 10 percent causes an increase in the performance of integration by 8.7 percent, which is a high system responsiveness to the improvement of digital capability. There is also a corresponding improvement of 7.6 percent performance, which leads to a 1-on-1 comparison of Data Interoperability, which is a necessary enabling parameter. On the other hand, a 10% change in the Complexity of the Project leads to 6.4% change in the performance of the integration in the opposite direction, and this justifies its disruptive attributes in system efficiency. The outcomes of such demonstrate that integration performance is highly sensitive to the facilitating and inhibiting parameters and that it is crucial to make sure that the digital capabilities and interoperability are enhanced simultaneously and that the complexity of the project is handled adequately to gain the best possible outcomes on the system level.

TABLE VII
SENSITIVITY ANALYSIS OF INTEGRATION PERFORMANCE

Parameter Perturbation ($\pm 10\%$)	Change in Integration Performance (%)
Technology Capability	+8.7
Project Complexity	-6.4
Data Interoperability	+7.6

V. DISCUSSION

The swift digitalization of the construction sector has changed the process of project delivery, which is fragmented and would be document-based, into an engineering system based on data and that depends on integrated digital subsystems to coordinate, control, and optimize performance. In this context, the current research explored the impact of smart construction technology capability on the project integration performance and the fact that such a relationship is mediated by the project complexity and data interoperability standards. The results can be used to generalize on current research in the digital construction sector because they show that technology adoption is a high-gain system capability, the effectiveness of which is highly dependent on the environmental constraints and coupling mechanisms in the project system.

The findings affirm that the ability to use smart construction technology has a robust and positive impact on the performance of project integration, which substantiates the assumption that the use of digital technologies like BIM, IoT platforms, automation systems, and AI-based decision support technologies helps to improve the coordination of the system level of the project [52]. In engineering, what this finding means is that the functional alignment in the design, cost, and scheduling subsystems is enhanced by technology capability through real-time data synchronization, minimization of information latency, and prediction decision making. Instead of acting as support mechanisms in the operations, smart technolo-

gies act as central control inputs that enhance the efficiency of integration and stabilize operations in the project [29]. This is consistent with the previous studies in relation to the importance of digital technologies in enhancing the accuracy of coordination and minimizing the deviation in performance, as well as in the additional quantification of the effect of such technologies on a single system performance model.

The analysis also indicates that project complexity greatly reduces the positive impact of technology capability on the integration performance, which demonstrates complexity as one of the disturbing factors in the system. Both environmental, organizational, and technical high complexity bring about uncertainty, expand interdependencies, and disrupt information flow, hence limiting the ability of digital tools to spread performance gains to subsystems [53]. In spite of the advanced technologies implemented, too much complexity can decrease the responsiveness of a system and limit the optimization of the performance. This result supports the opinion that technological progress is an inadequate factor to ensure efficiency of integration; rather, complexity should be controlled in a proactive manner to avoid the deterioration of system-level performance [5]. The finding empirically demonstrates complexity management as a necessary condition for successful digital integration in the construction engineering system.

Conversely, standards of data interoperability were observed to mediate the association between the capability of technology and performance of integration in a positive way, which shows that they play a role as a system coupling tool [27]. Standardized data formats, integration protocols, and software compatibility allow for high levels of interoperability that ensure a flow of information across platforms and stakeholders, which helps digital technologies perform to the full capacity [10]. Considering the system engineering perspective, interoperability decreases friction between subsystems, increases data coherence, and has a performance impact due to technology capability. This observation is important to show that interoperability is not merely a technical compliance factor but a strategic architectural factor that determines the presence of digital investments in quantifiable integration advantages.

Taken together, the findings are a powerful empirical measure of the socio-technical systems perspective as they indicate that the performance of project integration is an emerging phenomenon that evolves due to the interaction of the technological possibilities as well as the circumstances of the contextual system [6]. The most powerful performance advantages of smart construction technologies usage are developed under the circumstances of moderate complexities and effective interoperability structures. The results suggest that digital construction systems should be multifaceted and all three dimensions of technology implementation, such as complexity control, data architecture, and data, should be considered on an equal basis [46]. The quantification of these interactions based on computational modeling brings digital construction research past the descriptive evaluation of the research and offers it a predictive and performance-based analysis of the system.

All in all, as discussed, the digital transformation of construction is an engineering design issue, and not exactly a managerial one. Technology capability, complexity, and interoperability should be considered as the system parameters, which are dependent and need to be aligned to achieve integration effectiveness. This interpretation at the system level is used to formulate a strict basis for designing, implementing, and optimizing a digitally integrated construction environment that would be able to maintain high performance as the project demands increase.

The results of the current research can have valuable theoretical and practical implications, as they place the smart construction technologies in the context of system engineering and performance optimization. Instead of viewing digital tools as independent solutions, the findings show that the effectiveness of the latter is determined by the extent to which they are

integrated into the larger project system, especially regarding complexity management and data interoperability architecture. Theoretically, this research builds on the socio-technical systems approach by empirically establishing that digital construction technologies are functioning as high-gain system capabilities whose performance outcome depends upon the contextual system conditions. The results contribute to the development of theory by refocusing project integration as an objective of behavior or management, and instead, project integration is an output of system performance that is delivered through the interaction of the technological subsystems, disturbances in the environment, and data-coupling mechanisms. The modeled technology capability, project complexity, and interoperability as interacting system parameters give the study a quantitative basis in future engineering research to predictively model systems, optimize systems, and control performance in digital construction environments. The results also contribute to the digital construction theory through the increase of the data interoperability, not only as a technical prerequisite but as one of the architectural design variables as well. The amplification effect interoperability has on performance based on technology-driven integration states that the digital standards, data management, and compatibility of platforms should be included in the design of the construction system. The perspective is a stimulus to researchers in the future to adopt the system-based modeling strategies that vividly display the effects of interaction and boundary conditions to take the place of the linear assessment of technology adoption.

The findings of the research would be practically applicable in the engineering sector regarding the design and implementation of digitally integrated construction systems. The direct influence of technology capability on the integration performance is high, which proves that the BIM, IoT, automation, and AI-based decision-support tools may become a significant contributor to the effectiveness of the coordination of the design, cost, and scheduling subsystems. However, the moderating effects that were observed in this research refer to the reality that these investments only yield optimum returns in the circumstances where the investments are supported by intentional complexity management and effective interoperability facilities. The engineers, system designers, and project planners should prioritize complexity minimization and cost reduction, and control mechanisms engineered to minimize the performance degradation in high complexity project environments; they include modular project design, lean stakeholder interfaces, and dynamic governance mechanisms. Meanwhile, the standard data format, integration protocols, and cross-platform compatibility must be utilised in implementing interoperability requirements in the system architecture of organisations. The digital technologies are synchronized by these solutions, reducing fragmentation of the data and increasing real-time decision-making. The findings will put the policymakers and regulators of the industry on the need to have the industry-wide interoperability standards and digital construction guidelines. Regulatory support of standardized data environments may expedite the degree of system-wide integration, the degree of coordination inefficiencies, and the general performance of digitally enabled construction ecosystems. In this relation, the policy interventions should also be aimed not only at stimulating the utilization of technology, but also at developing the infrastructural and architectural setting, which will enable preserving the sustainable digital performance.

At the organization level, the study suggests that digital transformation initiatives must be handled as engineering system redesign initiatives and not as different technology upgrades. The managers and technical leaders would be required to overlay the workforce training, digital governance, and process reengineering onto the underlying system architecture in such a way that the technological capabilities might be transformed into actual integration advantages. The prevention of the issue of system readiness, data consistency, and complexity awareness may be a good con-

tributor to the reliability and efficacy of smart construction applications. Overall, research implications highlight that in order to guarantee high performance of project integration, there is a need to work on a balanced and systematic approach when digital technologies, complexity management, and interoperability infrastructure are balanced with one another. This combined view can give practical recommendations to engineers, practitioners, and policymakers who want to develop robust, high-performing digital construction systems that can support the growing needs of contemporary construction programs.

A. Limitations and future research directions

Although this research had high empirical and methodological input, it is associated with a number of limitations, including avenues to future research. First, the review is anchored on a cross-sectional dataset, preventing the possibility of observing the dynamic development of digital construction systems over time. Even though the system model based on MATLAB proves to be a strong predictor, it is the behaviour of the system at a single point in time. Further research would be interested in using longitudinal designs or time series models to study the dynamic nature of the interactions between technology capability, complexity, and interoperability at various project stages. Second, the research takes a fixed system modelling, which does not directly consider the dynamic feedback loops, responsive response, and non-linear behavior of a system that may be a common characteristic of a complex construction setting. Further research can add to the current framework by introducing dynamic simulation approaches, including system dynamics modeling, an agent-based approach, or a digital twin-based framework, to model feedback-based interactions and emergent system behavior under different operating conditions.

Third, the empirical setting of the study is restricted to the Singapore digital construction industry, which is a rather developed digital market. Although this background offers a solid contextual background to study smart construction technologies, the extrapolation of the results to other, less digitally developed areas or other regulatory contexts might be limited. The proposed system model might be tested and improved in future studies to benefit external validity by estimating its usefulness in various geographical areas, types of projects, and extent of digital maturity. Fourth, even though the research designs project complexity and data interoperability as important moderating system variables, other possible affecting system-level variables, like organizational digital maturity, cybersecurity preparedness, regulatory restrictions, and workforce digital competence, were not clearly stated. Further research can be done on extending the model to include these other parameters so that a more detailed model of digital construction system performance can be developed. Lastly, the research is concerned mainly with project integration performance as the result variable. Although it is a vital performance aspect, the framework can be further developed in future studies to explore other system outputs like sustainability performance, safety outcomes, cost efficiency, resiliency, and innovation capability. The scope of performance indicators needs to be widened, and the researchers ought to come up with multi-objective optimization models that would more accurately mirror the complexity of trade-offs involved in the design of smart construction systems.

VI. CONCLUSION

The paper shows that smart construction technology capability is a high-impact system enabler of project integration performance in digitally driven construction settings, and acknowledges that digital transformation in construction is an engineering system design challenge and not a mere managerial initiative. With the help of a MATLAB-based computational treatment, the conclusions reveal that highly innovative technolo-

gies (Building Information Modeling, Internet of Things platforms, automation systems, and AI-based decision-support tools) have a strong positive impact on the integration efficiency through the improvement of coordination between the design subsystem, cost subsystem, and scheduling subsystem; this positive outcome is not universal. A destabilizing system constraint was found to be project complexity, which destabilizes the gains in technology-driven performance under high levels of uncertainty and interdependence, and a strong set of data interoperability standards has been observed to enhance the impact of digital technologies by facilitating a smooth flow of information and consistent subsystem linkages. Basing their findings on the socio-technical systems approach, the findings present quantitative data that the project integration performance is the result of the interplay of technological capability, environmental constraints, and data architecture, and that requires them to combine their efforts to optimize these factors in a sustainable manner in an attempt to bring improved performance. On the whole, the research contributes to digital construction research by providing a system-oriented, reproducible framework of modeling and providing practical insights to engineers, system designers, and policymakers to create resilient, high-performing, and interoperable digital construction systems that can meet the increasing complexity and performance requirements of modern construction projects.

References

- [1] A. S. Kulinan, M. Park, P. P. W. Aung, G. Cha, and S. Park, "Advancing construction site workforce safety monitoring through BIM and computer vision integration," *Automation in Construction*, vol. 158, p. 105227, 2024.
- [2] S. Zhang, J. Liu, Z. Li, X. Xiahou, and Q. Li, "Analyzing critical factors influencing the quality management in smart construction site: A DEMATEL-ISM-MICMAC Based Approach," *Buildings*, vol. 14, no. 8, p. 2400, 2024. doi: 10.3390/buildings14082400
- [3] S. D. Datta, M. Islam, M. H. R. Sobuz, S. Ahmed, and M. Kar, "Artificial intelligence and machine learning applications in the project lifecycle of the construction industry: A comprehensive review," *Heliyon*, vol. 10, no. 5, 2024.
- [4] J. Liu, S. Zhang, Y. Hou, X. Xiahou, and Q. Li, "Analyzing critical influencing factors of the maturity of smart construction site applications," *Buildings*, vol. 14, no. 7, p. 1910, Jun. 2024. doi: 10.3390/buildings14071910
- [5] M. Sajjad, A. Hu, A. Waqar, I. I. Falqi, S. H. Alsulamy, A. S. Bageis, and A. M. Alshehri, "Evaluation of the success of industry 4.0 digitalization practices for sustainable construction management: Chinese construction industry," *Buildings*, vol. 13, no. 7, p. 1668, 2023. doi: 10.3390/buildings13071668
- [6] A. Aragón, P. Spudys, D. Pupeikis, Ó. Nieto, and M. Garcia Alberti, "Bridging interoperability gaps between LCA and BIM: Analysis of limitations for the integration of EPD data in IFC," *Buildings*, vol. 15, no. 15, p. 2760, 2025.
- [7] L. Liu and Y. Liu, "Advancing digital construction project: synergy mechanisms between integrated project delivery and digital management platforms," *Engineering, Construction and Architectural Management*, Jun. 2025. doi: 10.1108/ecam-03-2025-0384
- [8] Z. Azmat and M. A. Siddiqui, "Analyzing project complexity, its dimensions and their impact on project success," *Systems*, vol. 11, no. 8, p. 417, 2023.
- [9] A. Waqar, I. Othman, N. Saad, M. Azab, and A. M. Khan, "BIM in green building: Enhancing sustainability in the small construction project,"

- Cleaner Environmental Systems*, vol. 11, p. 100149, Dec. 2023. doi: 10.1016/j.cesys.2023.100149
- [10] S. N. Kamaruzzaman, S. N. Suznan, and N. E. Myeda, "Building Information Modelling Facilities Management (BIMFM) coordination for digital construction project," *Journal of Facilities Management*, vol. 21, no. 4, pp. 535-555, 2023.
- [11] S. K. Yevu, E. K. Owusu, A. P. Chan, S. M. Sepasgozar, and V. R. Kamat, "Digital twin-enabled prefabrication supply chain for smart construction and carbon emissions evaluation in building projects," *Journal of Building Engineering*, vol. 78, p. 107598, 2023. doi: 10.1016/j.jobe.2023.107598
- [12] T. H. Kang and J.-K. Hong, "Detailed analytical methods for simulation of concrete target resistance against F-4D jet impact," *Journal of Advances in Technology and Engineering Studies*, vol. 4, no. 1, pp. 1-8, 2018.
- [13] L. Gharaibeh, K. M. Eriksson, B. Lantz, S. Matarneh, and F. Elghaish, "Toward digital construction supply chain-based Industry 4.0 solutions: scientometric-thematic analysis," *Smart and Sustainable Built Environment*, vol. 13, no. 1, pp. 42-62, 2024.
- [14] Y. Jia, X. Shen, and X. Lin, "Exploration of the development strategy of building industrialization based on the application of smart construction technology," in *2023 4th International Conference on Management Science and Engineering Management (ICMSEM 2023)*. Atlantis Press, 2023.
- [15] M. S. Raza, B. A. Tayeh, Y. I. Abu Aisheh, and A. M. Maglad, "Potential features of Building Information Modeling (BIM) for application of project management knowledge areas in the construction industry," *Heliyon*, vol. 9, no. 9, p. e19697, 2023. doi: 10.1016/j.heliyon.2023.e19697
- [16] I. Y. Wuni and G. Q. Shen, "Exploring the critical success determinants for supply chain management in modular integrated construction projects," *Smart and Sustainable Built Environment*, vol. 12, no. 2, p. 258-276, Oct. 2021. doi: 10.1108/sasbe-03-2021-0051
- [17] R. Mittal and J. Solano, "Digital construction: Revolutionizing electrical design with BIM and automation," in *2023 International Conference on Sustainable Technology and Engineering (i-COSTE)*. IEEE, Dec. 2023. doi: 10.1109/i-coste60462.2023.10500792 p. 1-5. [Online]. Available: <http://dx.doi.org/10.1109/i-coste60462.2023.10500792>
- [18] G. Baxter and I. Sommerville, "Socio-technical systems: From design methods to systems engineering," *Interacting wit Computers*, vol. 23, no. 1, pp. 4-17, 2011.
- [19] W. A. Pasmore, "Seeing organizational patterns, by Robert W. Keidel. San Francisco: Berrett-Koehler Publishers, 1995," *Human Resource Management*, vol. 35, no. 1, p. 133-136, 1998. doi: 10.1002/hrm.3930350104
- [20] M. F. Muller, F. Esmanioto, N. Huber, E. F. R. Loures, O. Canciglieri Junior, and A. Costin, "Novel framework for BIM interoperability for sustainability and green buildings - An application for concrete structures," *Journal of Information Technology in Construction*, vol. 29, p. 40-57, Feb. 2024. doi: 10.36680/jitcon.2024.003. [Online]. Available: <http://dx.doi.org/10.36680/jitcon.2024.003>
- [21] K. Wang, F. Guo, C. Zhang, J. Hao, and Z. Wang, "Unlocking determinants of smart construction: An integrated model of UTAUT2, TTF, and perceived risk for IoT acceptance in AEC industry," *Engineering, Construction and Architectural Management*, vol. 32, no. 8, p. 5394-5428, 2024. doi: 10.1108/ecam-05-2023-0482
- [22] A. J. Shenhar and D. Dvir, "Project management research — the challenge and opportunity," *Project Management Journal*, vol. 38, no. 2, p. 93-99, Jun. 2007. doi: 10.1177/875697280703800210
- [23] J. Yu, Q. Shi, and J. Wang, "Policy analysis of smart construction pilot cities policies in China based on policy tools," *Smart Construction*, 2024. doi: 10.55092/sc20240004
- [24] T. Kim, H. Lim, M. Lee, M. Cha, and K. Cho, "Performance-influencing factors and causal relationships of construction projects using smart technology," *Buildings*, vol. 13, no. 6, p. 1431, 2023.
- [25] Y. Pan and L. Zhang, "Integrating BIM and AI for smart construction management: Current status and future directions," *Archives of Computational Methods in Engineering*, vol. 30, no. 2, p. 1081-1110, 2022. doi: 10.1007/s11831-022-09830-8
- [26] I. Shufrin, E. Pasternak, and A. Dyskin, "Environmentally friendly smart construction—review of recent developments and opportunities," *Applied Sciences*, vol. 13, no. 23, p. 12891, 2023. doi: 10.3390/app132312891
- [27] S. Abrishami, F. Elghaish, T. Brooks, and S. Talebi, "Guest editorial: Blockchain and building information management: Digital construction transformation," *Smart and Sustainable Built Environment*, vol. 13, no. 1, pp. 1-3, 2024.
- [28] H. Abdullah and A. K. Jamaai, "Properties of eco-brick manufactured using kenaf fibre as matrix," *Journal of Applied and Physical Sciences*, vol. 2, no. 1, pp. 20-24, 2016.
- [29] S. Sepasgozar, A. Khan, K. Smith, J. Romero, X. Shen, S. Shirowzhan, H. Li, and F. Tahmasebinia, "BIM and digital twin for developing convergence technologies as future of digital construction," *Buildings*, vol. 13, no. 2, p. 441, 2023. doi: 10.3390/buildings13020441
- [30] M. Khan, M. H. Javed, K. Bukhsh, U. Sajjad, and H. Umar, "Production of structural and nonstructural lightweight concrete using slate and plastic waste," *Journal of ICT, Design, Engineering and Technological Science (JITDETS)*, vol. 6, no. 2, pp. 1-7, 2022.
- [31] A. Parasuraman, "Technology Readiness Index (Tri): A Multiple-Item Scale to Measure Readiness to Embrace New Technologies," *Journal of Service Research*, vol. 2, no. 4, p. 307-320, 2000. doi: 10.1177/109467050024001
- [32] N. Rane, "Integrating leading-edge Artificial Intelligence (AI), Internet of Things (IoT), and big data technologies for smart and sustainable Architecture, Engineering and Construction (AEC) industry: Challenges and future directions," *SSRN Electronic Journal*, 2023. doi: 10.2139/ssrn.4616049
- [33] M. W. Fazil, P. F. Muhamad Tamyez, and C. K. Lee, "Enhancing cost estimation performance through effective organizational control: The moderating role of project complexity in construction projects," *International Journal of Construction Management*, vol. 24, no. 15, pp. 1630-1642, 2024.
- [34] S. Kermanshachi, T. J. Nipa, and B. Dao, "Development of complexity management strategies for construction projects," *Journal of Engineering, Design and Technology*, vol. 21, no. 6, pp. 1633-1657, 2023.
- [35] Z. Lafhaj, S. Rebai, W. AlBalkhy, O. Hamdi, A. Mossman, and A. Alves Da Costa, "Complexity in construction projects: A literature review," *Buildings*, vol. 14, no. 3, p. 680, 2024.
- [36] M. Mohamed and D. Q. Tran, "Exploring the relationships between project complexity and quality management approaches in highway construction projects," *Transportation Research Record: Journal of the Transportation Research Board*, vol. 2677, no. 5, p. 390-402, Nov. 2022. doi: 10.1177/03611981221131308. [Online]. Available: <http://dx.doi.org/10.1177/03611981221131308>

- [37] R. Turner and M. Huemann, "Managing project complexity," in *The Handbook of Project Management*. Routledge, 2024.
- [38] S. Theis and M. Poesch, "Mitigation bank applications for freshwater systems: Control mechanisms, project complexity, and caveats," *PLOS ONE*, vol. 19, no. 2, p. e0292702, 2024. doi: 10.1371/journal.pone.0292702
- [39] V. K. Paul and P. S. Yadav, "Project complexity management: Research trends and the way forward," *International Journal of Indian Culture and Business Management*, vol. 1, no. 1, 2023. doi: 10.1504/ijicbm.2023.10062064
- [40] M. Elrayah and S. Mirzaliev, "Project management capabilities and inventory control impact on project success: Does project complexity matters," *International Journal of Instructional Cases*, vol. 8, no. 2, pp. 235-261, 2024.
- [41] I. Abdullahi, C. Watters, G. Kapogiannis, and M. K. Lemański, "Role of digital strategy in managing the planning complexity of mega construction projects," *Sustainability*, vol. 15, no. 18, p. 13809, 2023.
- [42] M. M. Filardo, L. Liu, P. Hagedorn, S. Zentgraf, J. Melzner, and M. König, "A standard-based ontology network for information requirements in digital construction projects," in *Proceedings of the 12th Linked Data in Architecture and Construction Workshop*, 2024.
- [43] M. L. R. Antunes, K. M. L. C. Júnior, J. C. L. Ribeiro, D. S. de Oliveira, and J. M. F. de Carvalho, "Analysis of IFC interoperability data schema for project representation," *Automation in Construction*, vol. 166, p. 105650, 2024.
- [44] K. Jaskula, D. Kifokeris, E. Papadonikolaki, and D. Rovas, "Common data environments in construction: State-of-the-art and challenges for practical implementation," *Construction innovation*, vol. 25, no. 5, pp. 1522-1541, 2025.
- [45] B. Kim, K. Sri Preethaa, S. Song, R. Lukacs, J. An, Z. Chen, E. An, and S. Kim, "Internet of things and ensemble learning-based mental and physical fatigue monitoring for smart construction sites," *Journal of Big Data*, vol. 11, no. 1, p. 115, 2024.
- [46] D. M. K. Dave and B. K. Mittapally, "Data integration and interoperability in IoT: Challenges, strategies and future direction," *International Journal of Computer Engineering and Technology(IJCET)*, vol. 15, pp. 45-60, 2024.
- [47] M. Shariatfar and Y.-C. Lee, "Urban-level data interoperability for management of building and civil infrastructure systems during the disaster phases using model view definitions," *Journal of Computing in Civil Engineering*, vol. 37, no. 1, 2023. doi: 10.1061/(asce)cp.1943-5487.0001040
- [48] O. Adeniyi, N. Thurairajah, and F. Leo-Olagbaye, "Rethinking digital construction: A study of BIM uptake capability in BIM infant construction industries," *Construction Innovation*, vol. 24, no. 2, pp. 584-605, 2024.
- [49] M. Bosch-Rekveltdt, Y. Jongkind, H. Mooi, H. Bakker, and A. Verbraeck, "Grasping project complexity in large engineering projects: The TOE (Technical, Organizational and Environmental) framework," *International Journal of Project Management*, vol. 29, no. 6, pp. 728-739, 2011.
- [50] S. M. Mohd Tarli, "The effects of supply chain visibility, supply chain flexibility, supplier development and inventory control toward supply chain effectiveness," *SSRN Electronic Journal*, 2017. doi: 10.2139/ssrn.2984513
- [51] R. A. Danladi and D. K. Ahadzie, "Competencies required of project managers at the conceptual phase of mass housing building projects in Ghana," *International Journal of Construction Project Management*, vol. 11, no. 2, 2019.
- [52] M. Malykhin, O. Pylypchuk, V. Tytok, O. Emelianova, and A. Tugay, "Digital standards and protocols for interoperability in construction systems and methodologies," *Architecture Image Studies*, vol. 5, no. 2, p. 52-69, Nov. 2024. doi: 10.62754/ais.v5i2.98. [Online]. Available: <http://dx.doi.org/10.62754/ais.v5i2.98>
- [53] N. Liu, D. Guo, Z. Song, S. Zhong, and R. Hu, "Bim-based digital platform and risk management system for mountain tunnel construction," *Scientific Reports*, vol. 13, no. 1, May 2023. doi: 10.1038/s41598-023-34525-w. [Online]. Available: <http://dx.doi.org/10.1038/s41598-023-34525-w>